

GPD 产品问答

GPD Product Q&A

GPD 製品に関する Q&A

- 目录 / Contents / 目錄
- GPD WIN 4
- GPD WIN Max 2 (6800U / 1260P)
- GPD Pocket 3 (1195G7 / N6000)

深圳市中软赢科技有线公司

Tel: +86 0755-86572275

website: www.gpd.hk www.softwincn.com

目录 / Contents / 目錄

GPD WIN 4..... 1

[中文] GPD WIN 4 问答..... 2

 Q1: 如何调节设备的 TDP 功耗?2

 Q2: 如何开启或关闭键盘背光灯?2

 Q3: 我的系统坏掉了, 又不懂重装系统, 如何实现“一键还原”?2

[Englis] GPD WIN 4 Q&A..... 3

 Q1: How to adjust the TDP power consumption of equipment?.....3

 Q2: How to turn the keyboard backlight on or off?.....3

 Q3: When my WIN 4 system is broken, I don't know how to re-install system, how can I implement the "one key recovery" ?.....3

GPD WIN Max 2 (6800U / 1260P) 4

[中文] GPD WIN Max 2 问答..... 5

 Q1: 如何调节设备的 TDP 功耗?5

 Q2: 如何开启或关闭键盘背光灯?5

 Q3: 如何开启或关闭风扇?5

 Q4: 如何卸载和安装 Nano-SIM 卡?5

 Q5: 如何卸载和安装 M.2 2230 SSD?6

 Q6: 我的系统坏掉了, 又不懂重装系统, 如何实现“一键还原”?7

[Englis] GPD WIN Max 2 Q&A..... 8

 Q1: How to adjust the TDP power consumption of equipment?.....8

 Q2: How to turn the keyboard backlight on or off?.....8

 Q3: How to turn the fan on or off?.....8

 Q4: How to uninstall and install Nano-SIM?.....8

 Q5: How to Uninstall and Install an M.2 2230 SSD?.....9

 Q6: When my WIN Max 2 system is broken, I don't know how to re-install system, how can I implement the "one key recovery" ?.....10

GPD Pocket 3 (1195G7 / N6000) 11

[中文] GPD Pocket 3 问答..... 12

 Q1: 如何调节设备的 TDP 功耗?12

 Q2: 如何开启或关闭键盘背光灯?12

 Q3: 如何开启或关闭风扇?12

 Q4: 如何卸载和安装 RS-232 / KVM 模块?12

 Q5: 如何开启相机?13

 Q6: 如何通过 KVM 模块, 控制另一台设备?13

 Q7: 我的系统坏掉了, 又不懂重装系统, 如何实现“一键还原”?14

[Englis] GPD Pocket 3 Q&A 15

 Q1: How to adjust the TDP power consumption of the device?.....15

 Q2: How to turn on or off the keyboard backlight?.....15

 Q3: How to turn on or off the fan?.....15

 Q4: How to install and remove the RS-232/KVM module?.....15

 Q5: How to turn on the camera?.....16

 Q6: How to control another device using the KVM module?.....16

 Q7: When my WIN Max system is broken, I don't know how to re-install system, how can I implement the "one key recovery" ?.....17

[日本語] GPD Pocket 3 質疑応答..... 19

Q1: 設備の TDP 電力消費量の調整方法.....	19
Q2: キーボードのバックライトを消す方法は?	19
Q3: ファンをオン・オフにする方法は?	19
Q4: RS-232 / KVM モジュールを取り付け・取り外しする方法は?	19
Q5: カメラを起動する方法は?	20
Q6: KVM モジュールで別の機器を制御する方法は?	20
Q7: システムが壊れる時、リカバリー資料持ってない場合、初期化方法ありますか?	21

GPD WIN 4



[中文] GPD WIN 4 问答

Q1: 如何调节设备的 TDP 功耗?

A1: 请使用系统自带的“MotionAssistant 体感助手”, 它包含了多个系统优化工具, 如右图:

也可以通过以下链接下载:

- 中文官网下载链接: <http://softwincn.com/gpdwinmax2gjxz>
- 英文官网下载链接: <https://gpd.hk/gpdwinmax2firmwareanddriver>



Q2: 如何开启或关闭键盘背光灯?

A1: 操作非常简单, 按下 Fn + Space 组合键实现键盘背光灯的常亮或关闭。当键盘背光灯开启, 关机后再次开机, 默认键盘灯开启; 如在开机状态关闭键盘灯, 则关机后再次开机, 键盘灯默认关闭。



请注意:

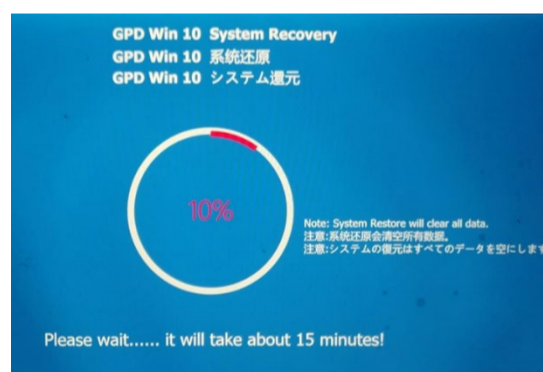
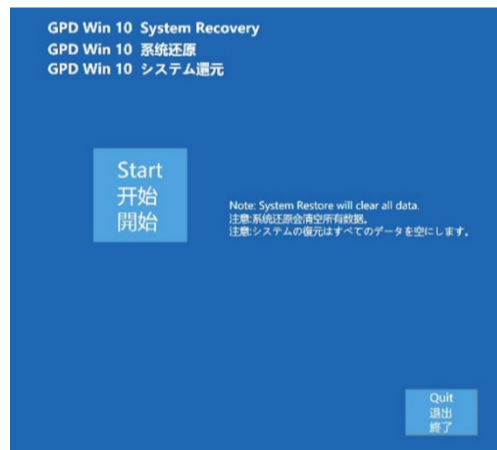
键盘背光灯常亮会耗电, 建议白天关闭。

Q3: 我的系统坏掉了, 又不懂重装系统, 如何实现“一键还原”?

A4: “一键还原”是可以的, 具体操作如下:

第一步: 关闭设备, 按“电源键”开机的同时, 按住“Tab”键, 机器进入下图界面:

第二步: 点击“开始”即可还原到出厂系统, 点击“退出”即可退出还原功能。还原过程如下图所示, 需要等待 15 分钟左右, 完成后, 会自动重启进入系统。



请注意:

- 还原时, 必须保持电量在 50%以上, 或者插入充电器下进行, 电量低于 50%将无法还原。
- 系统还原会清空 C 盘所有数据, 请提前备份好重要问文件。还原界面支持触屏和鼠标操作。

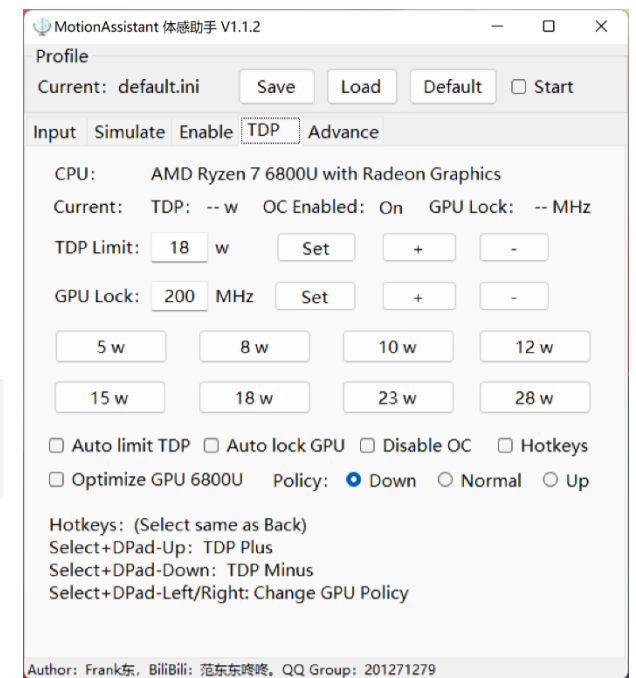
[English] GPD WIN 4 Q&A

Q1: How to adjust the TDP power consumption of equipment?

A1: Please use the "MotionAssistant" provided by the system, which contains several system optimization tools, as shown in the right figure.

It can also be downloaded via the link below:

- Chinese official website download link: <https://softwincn.com/gpdwin4gixz>
- English official website download link: <https://gpd.hk/gpdwin4firmwaredriver>



Q2: How to turn the keyboard backlight on or off?

A1: The operation is very simple. Press Fn + Space key combination to make keyboard backlight stays on or turn off. When keyboard backlight is turned on, shut down the machine and restart, the keyboard light is turned on by default. If the keyboard light is turned off on boot-up status, you shut down the machine and restart, the keyboard light is turned off by default.



Notice:

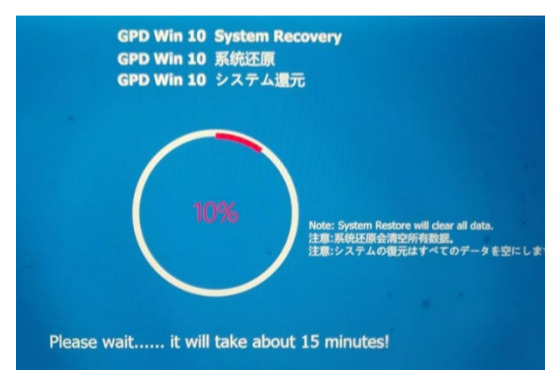
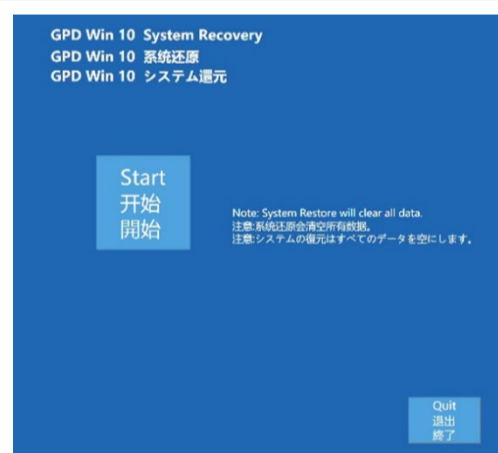
The backlight of the keyboard will consume power, so it is recommended to turn it off during the day.

Q3: When my WIN 4 system is broken, I don't know how to re-install system, how can I implement the "one key recovery" ?

A4: "one key recovery" is available, you can follow the steps below:

Step 1st: turn off the device, press the "power key" while booting, press and hold the "Tab" key.

Step 2nd: Click "Start" to recovery the factory system, click "Exit" to exit the function. The restoration process is shown in the figure below. You need to wait for about 15 minutes. After the completion, it will restart and enter the system automatically.



Cautions:

- When recovering, the power must be kept above 50%, or plugged into the charger, the power below 50% will not be able to recovery.
- The system recovery will clear all data on the C drive. Please back up important files in advance. The recovery interface supports touch screen and mouse operations.

GPD WIN Max 2 (6800U / 1260P)



[中文] GPD WIN Max 2 问答

Q1: 如何调节设备的 TDP 功耗?

A1: 请使用系统自带的“MotionAssistant 体感助手”，它包含了多个系统优化工具，如右图：

也可以通过以下链接下载：

- 中文官网下载链接：<http://softwincn.com/gpdwinmax2gjxz>
- 英文官网下载链接：<https://gpd.hk/gpdwinmax2firmwareanddriver>

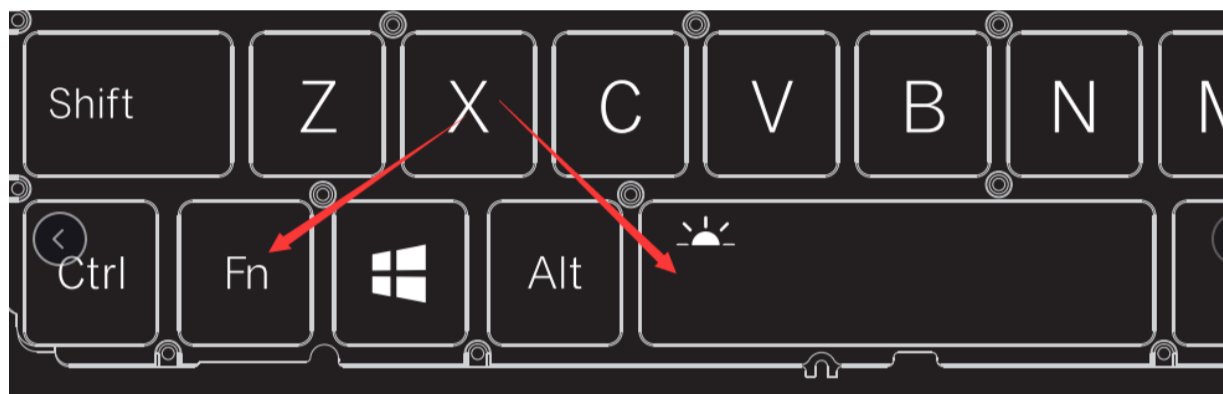


Q2: 如何开启或关闭键盘背光灯?

A1: 操作非常简单，按下 Fn + Space 组合键，就可以启用键盘背光灯，键盘背光灯默认是开启并长亮，亮度分两档，所以假设键盘灯在关闭状态连续按三次组合键，则依序为：键盘灯弱光、键盘灯强光，键盘灯关闭。

请注意：

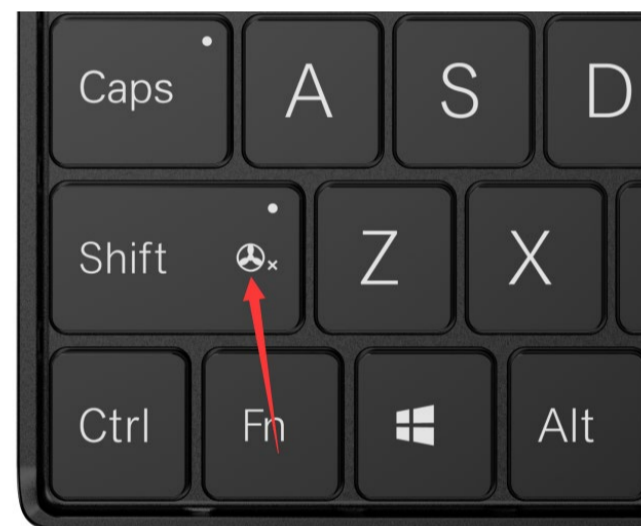
键盘背光灯常亮会耗电，建议白天关闭。



Q3: 如何开启或关闭风扇?

A1: WIN Max 2 不能彻底关闭风扇，当指示灯关闭时，此时风扇会根据核心温度，动态调整风扇转速（性能模式）。

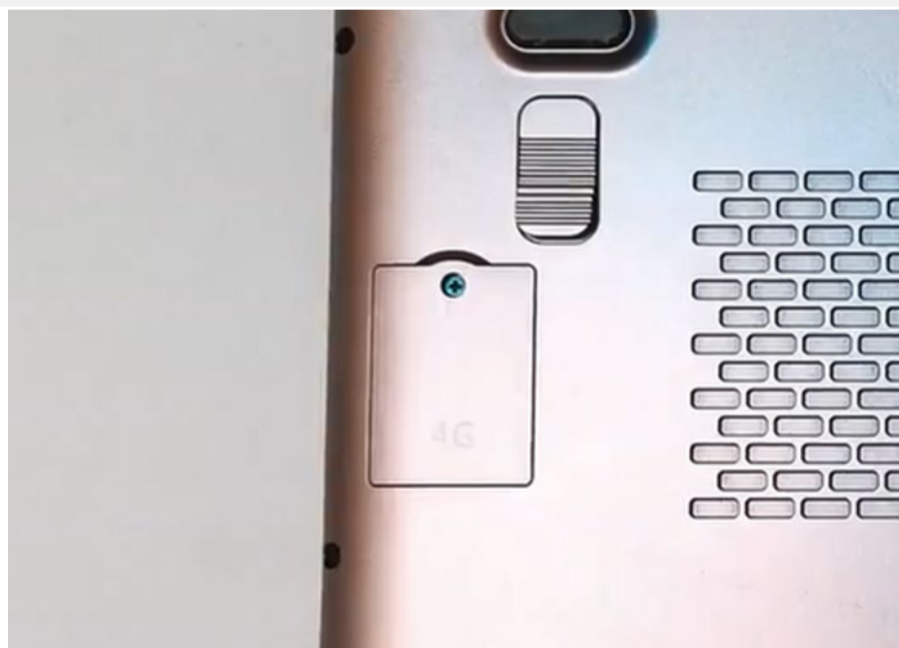
当按组合键 Fn+左 Shift，指示灯长亮，风扇实际是处于低速旋转（静音模式）。



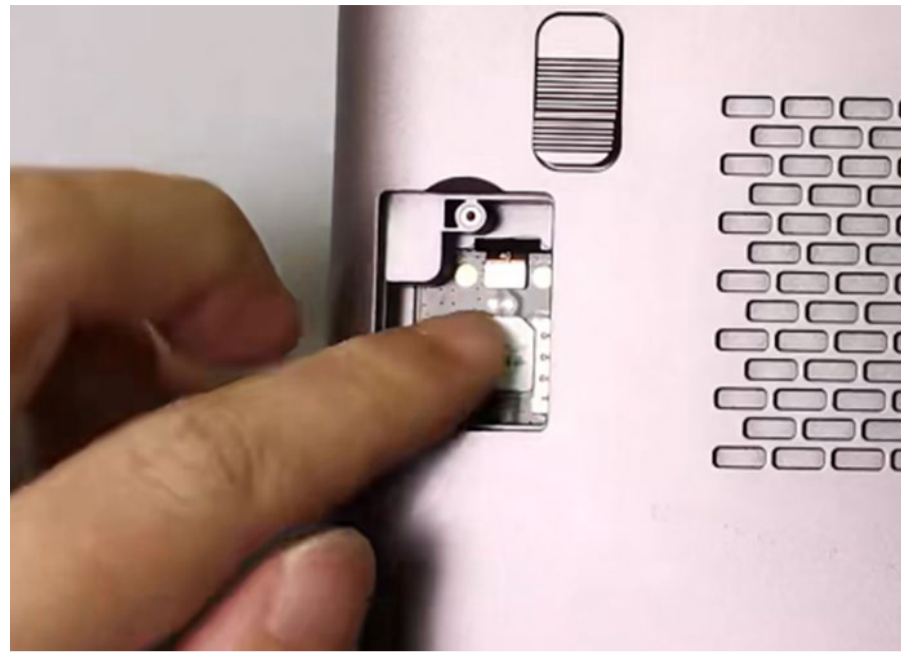
Q4: 如何卸载和安装 Nano-SIM 卡?

A1: 当您选择 4G LTE 版 WIN Max 2，意味着您可以将手机卡插入内置的 4G LTE 模块，通过移动网络上网，而不再局限于 Wi-Fi 网络。WIN Max 2 仅支持 Nano-SIM 卡，安装方法非常简单：

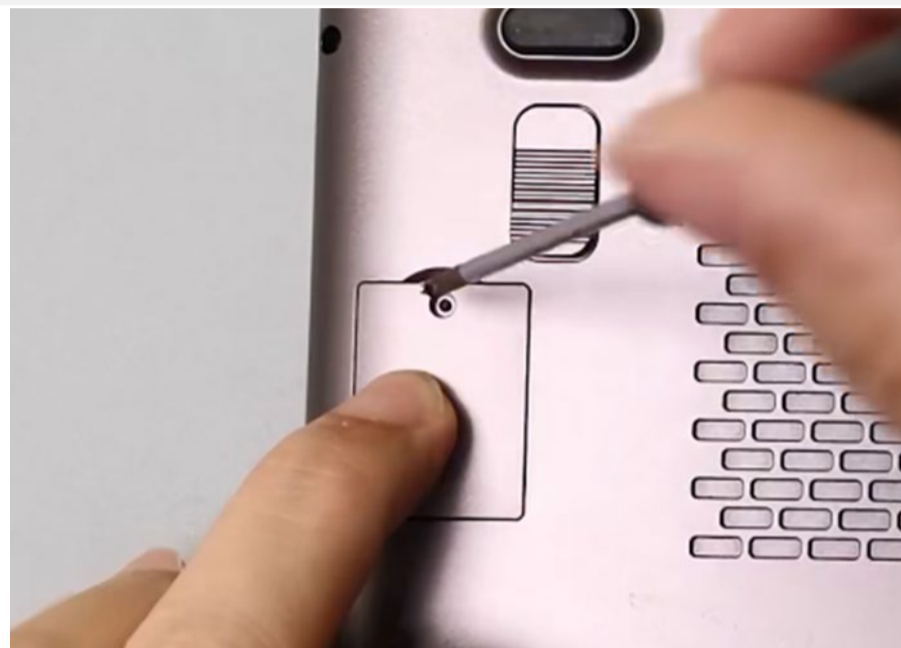
第一步：用 2.5mm 口径十字螺丝刀，卸下 4G LTE 模块盖子上的螺丝。



第二步：按照指示图标方向，放入 Nano-SIM 卡，用手指轻轻推送进卡槽，露出一小点卡为插入成功，再次按下卡会弹出。



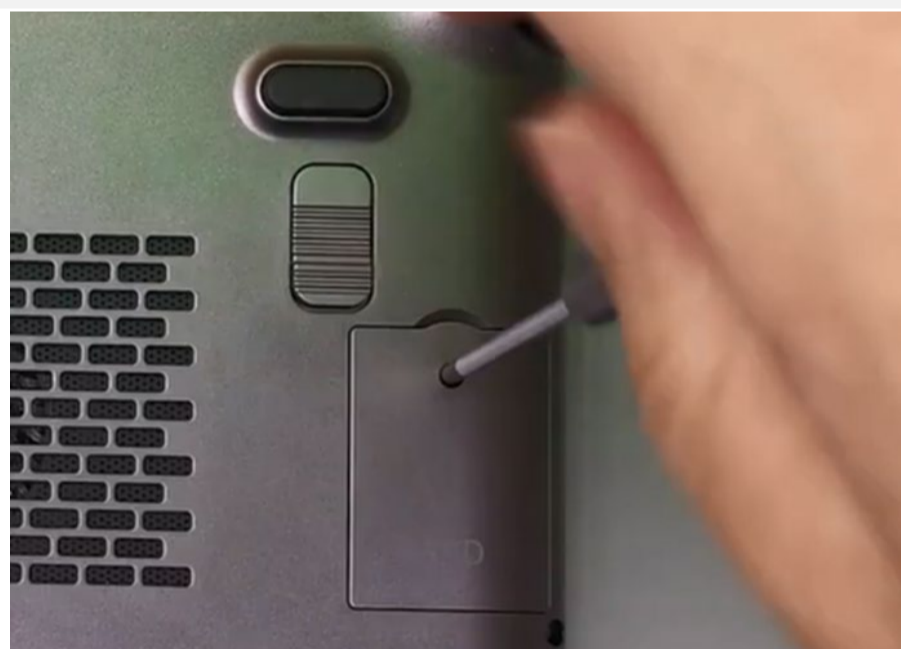
第三步，盖上盖子，放入螺丝，用螺丝刀紧固。



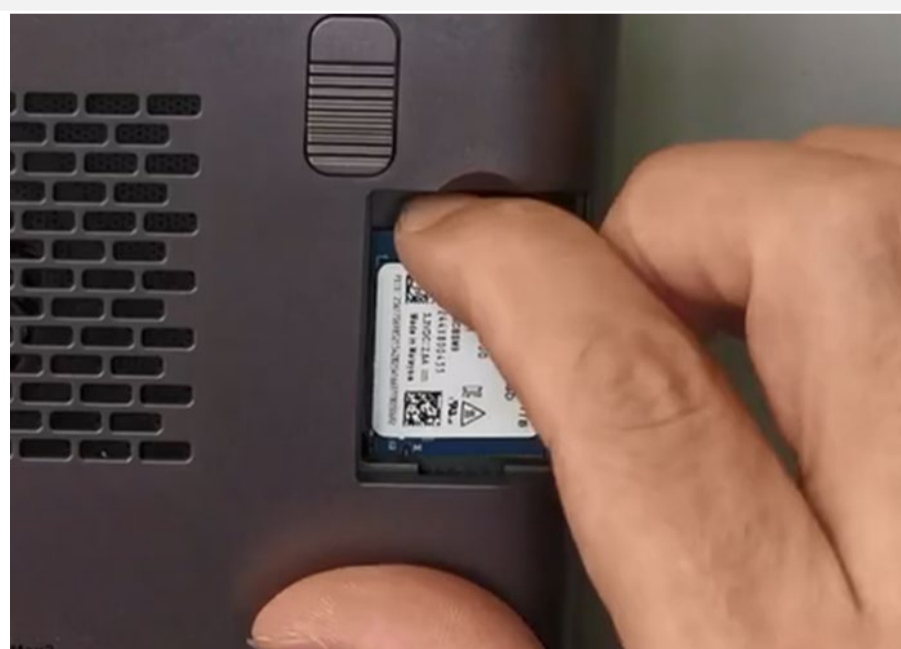
Q5: 如何卸载和安装 M.2 2230 SSD?

A1: 2230 SSD 相比 Nano-SIM 卡的安装更容易，具体操作步骤如下：

第一步：关闭计算机。用 2.5mm 口径十字螺丝刀，卸下 SSD 盖子上的螺丝。



第二步：器件的一面朝上，将 SSD 卡金手指部分对准卡槽部分插入。



第三步：盖上盖子，放入螺丝，用螺丝刀紧固。

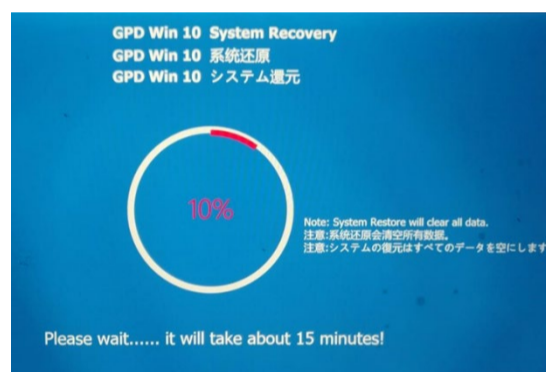
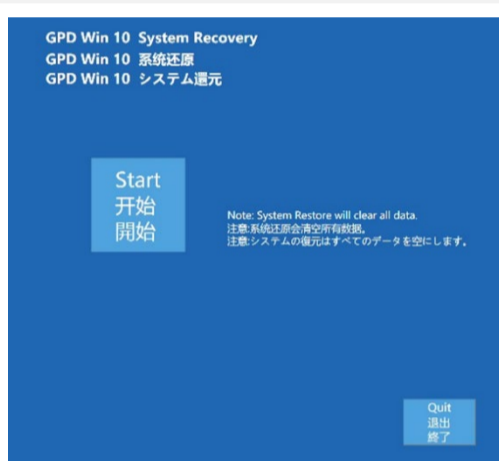


Q6: 我的系统坏掉了, 又不懂重装系统, 如何实现“一键还原”?

A4: “一键还原”是可以的, 具体操作如下:

第一步: 关闭设备, 按“电源键”开机的同时, 按住“Tab”键, 机器进入下图界面:

第二步: 点击“开始”即可还原到出厂系统, 点击“退出”即可退出还原功能。还原过程如下图所示, 需要等待 15 分钟左右, 完成后, 会自动重启进入系统。



请注意:

- 还原时, 必须保持电量在 50%以上, 或者插入充电器下进行, 电量低于 50%将无法还原。
- 系统还原会清空 C 盘所有数据, 请提前备份好重要问文件。还原界面支持触屏和鼠标操作。

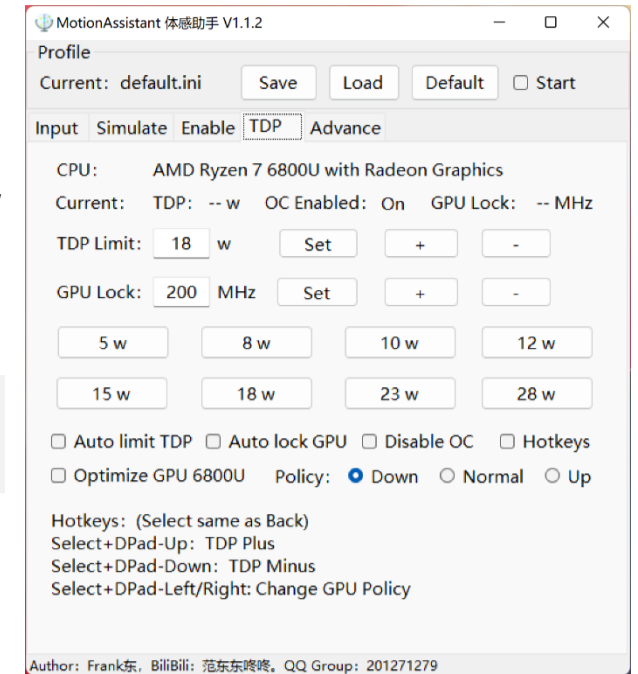
[English] GPD WIN Max 2 Q&A

Q1: How to adjust the TDP power consumption of equipment?

A1: Please use the "MotionAssistant" provided by the system, which contains several system optimization tools, as shown in the right figure.

It can also be downloaded via the link below:

- Chinese official website download link: <http://softwincn.com/gpdwinmax2qjxz>
- English official website download link: <https://gpd.hk/gpdwinmax2firmwareanddriver>



Q2: How to turn the keyboard backlight on or off?

A1: The operation is very simple. The keyboard backlight can be enabled by pressing the Fn + Space key combination. The keyboard backlight is turned on by default and stays on, and the brightness is divided into two levels. Therefore, assuming that the keyboard light is in the off state, pressing the key combination three times in sequence means the keyboard light is weak, the keyboard light is strong, and the keyboard light is off.

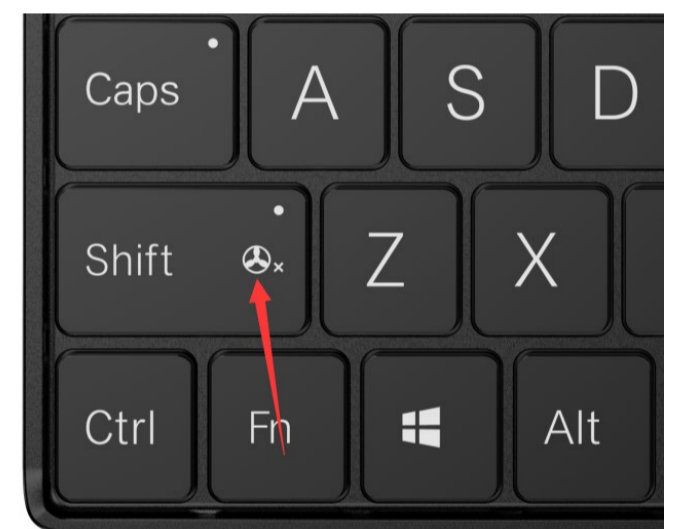


Notice:

The backlight of the keyboard will consume power, so it is recommended to turn it off during the day.

Q3: How to turn the fan on or off?

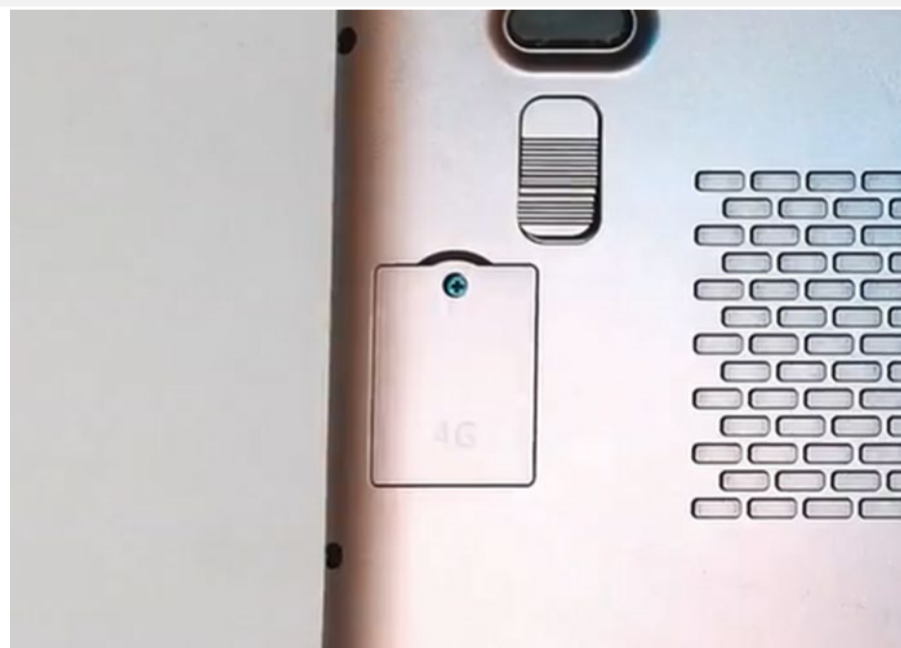
A1: WIN Max 2 cannot completely turn off the fan. When the indicator light is off, the fan will dynamically adjust the fan speed (performance mode) according to the core temperature. When pressing the key combination Fn+ left Shift, the indicator light will be on, and the fan is actually in low-speed rotation (silent mode).



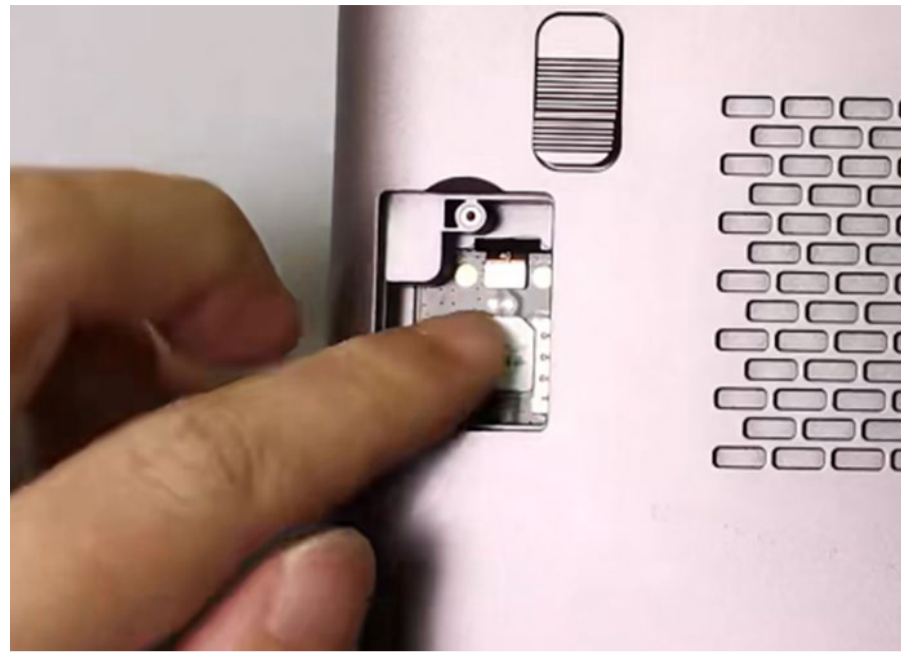
Q4: How to uninstall and install Nano-SIM?

When you choose the 4G LTE version of WIN Max 2, it means that you can insert the mobile phone card into the built-in 4G LTE module to access the Internet through the mobile network, instead of being limited to using the Wi-Fi network. WIN Max 2 only supports Nano-SIM cards, the installation method is very simple:

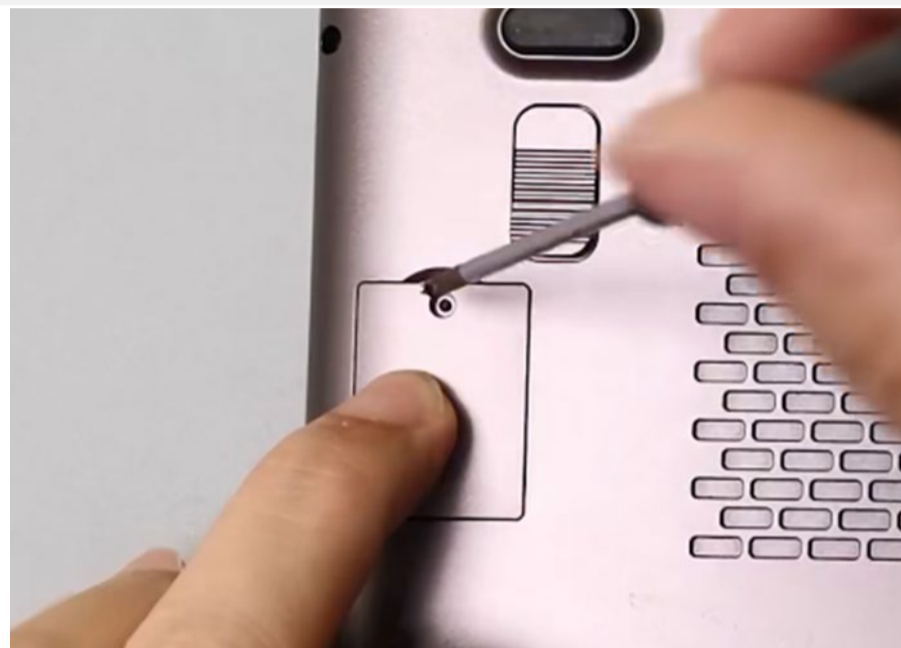
Step 1: Use a 2.5mm Phillips screwdriver to remove the screw on the 4G LTE module cover.



Step 2: Insert the Nano-SIM card according to the direction of the icon. Gently push it into the card slot with your finger until only a small part of the card is exposed, which indicates successful insertion, and the card will pop out when you press it again.



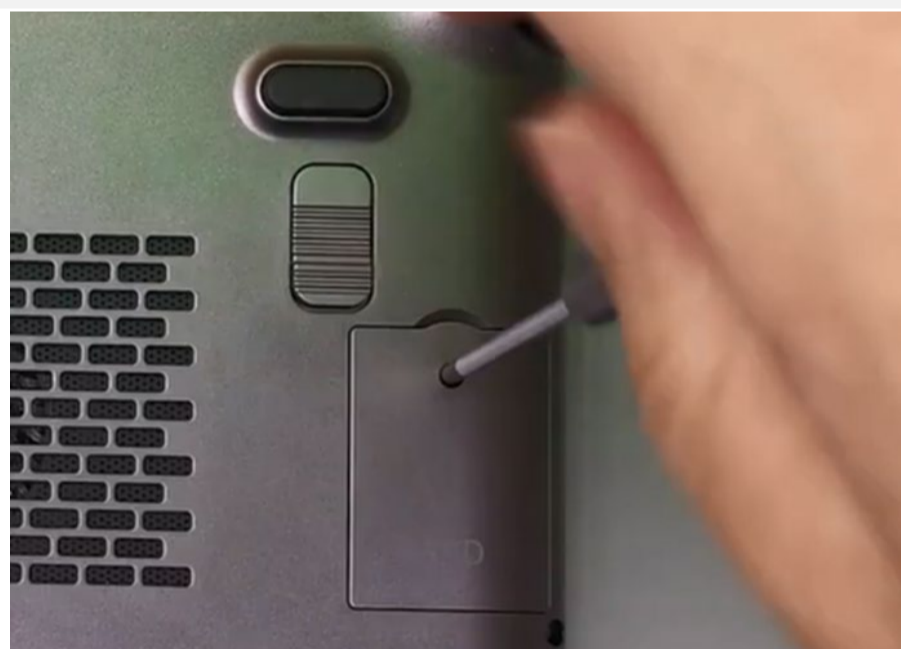
Step 3: Close the cover, put in the screw, and fasten it with a screwdriver.



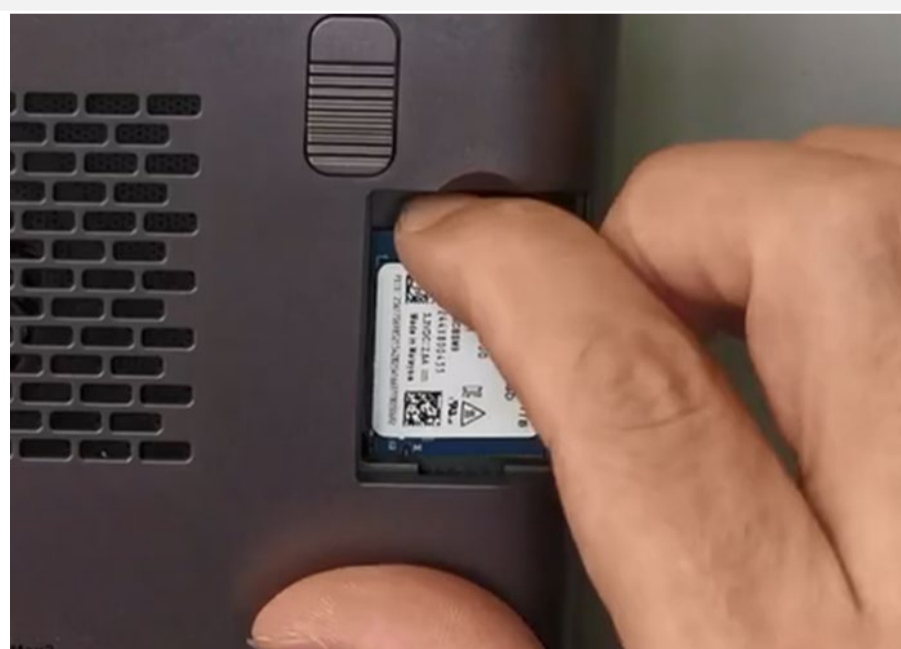
Q5: How to Uninstall and Install an M.2 2230 SSD?

A1: Compared with Nano-SIM card, the installation of 2230 SSD is easier. The specific operation steps are as follows:

Step 1: Turn off the computer. Use a 2.5mm Phillips screwdriver to remove the screw on the SSD cover.



Step 2: With the side of the component facing upward, align the gold finger of the SSD card with the card slot and insert it.



Step 3: Close the cover, put in the screw, and fasten it with a screwdriver.

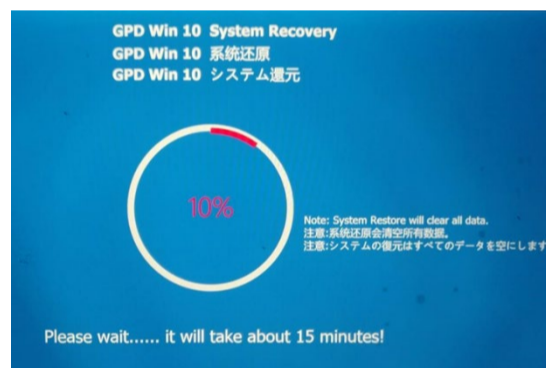


Q6: When my WIN Max 2 system is broken, I don't know how to re-install system, how can I implement the "one key recovery" ?

A4: "one key recovery" is available, you can follow the steps below:

Step 1st: turn off the device, press the "power key" while booting, press and hold the "Tab" key.

Step 2nd: Click "Start" to recovery the factory system, click "Exit" to exit the function. The restoration process is shown in the figure below. You need to wait for about 15 minutes. After the completion, it will restart and enter the system automatically.



Cautions:

- When recovering, the power must be kept above 50%, or plugged into the charger, the power below 50% will not be able to recovery.
- The system recovery will clear all data on the C drive. Please back up important files in advance. The recovery interface supports touch screen and mouse operations.

GPD Pocket 3 (1195G7 / N6000)



[中文] GPD Pocket 3 问答

Q1: 如何调节设备的 TDP 功耗?

A1: 很简单, 通过 BIOS 调节即可, 具体操作是:

- 1、按电源键开机, 同时按住 Fn+Del 键进入 BIOS
- 2、选择 Setting 签页
- 3、单击 Configuration TDP Boot Mode, 在弹出的选择框中, 有 Nominal、Down 和 Up 三档 TDP 供选择, 其中:
 - Down: 为节能模式 (12W)
 - Nominal: 为普通模式 (15W)
 - UP: 为高性能模式 (20W)
- 4、选择后, 按 Fn+F4 键保存, 重启生效。(关于 BIOS 界面, 请参考下图)



请注意:

Pocket 3 (N6000 处理器) 版本, 不支持三档功耗调节, 仅支持 6~10W 功耗调节。

Q2: 如何开启或关闭键盘背光灯?

A1: 操作非常简单, 当开机后, 按下 Fn + Space 组合键, 就可以启用键盘背光灯, 再次按下组合键就可以关闭。

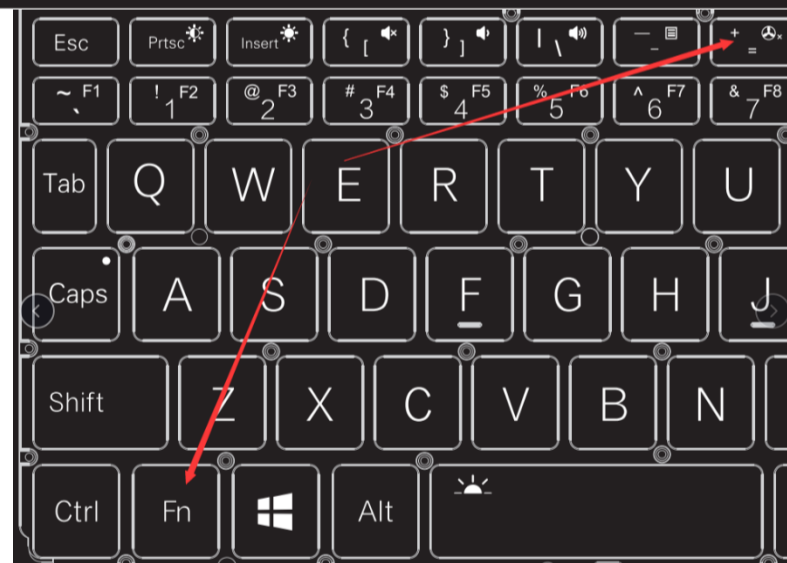
请注意:

键盘背光灯开启 30 秒后, 自动熄灭。



Q3: 如何开启或关闭风扇?

A1: Pocket 3 不能彻底关闭风扇, 但增加了风扇静音功能。当开机后, 风扇默认开启, 并且根据温度自动调节风扇转速, 如想静音, 只需按下“Fn+=”组合键, 就会进入静音模式, 此时风扇在超低速选准。



Q4: 如何卸载和安装 RS-232 / KVM 模块?

A1: Pocket 3 默认标配 USB A 模块, 如您购买了 RS-232 或 KVM 模块, 那么安装过程也非常简单:

第一步: 用 2.5mm 口径十字螺丝刀, 卸下 USB A 模块的两个螺丝, 并拔出 USB A 模块



第二步: 插入 RS-232 或 KVM 模块, 插到底。注意插入的方向, 主板的一面在下方。

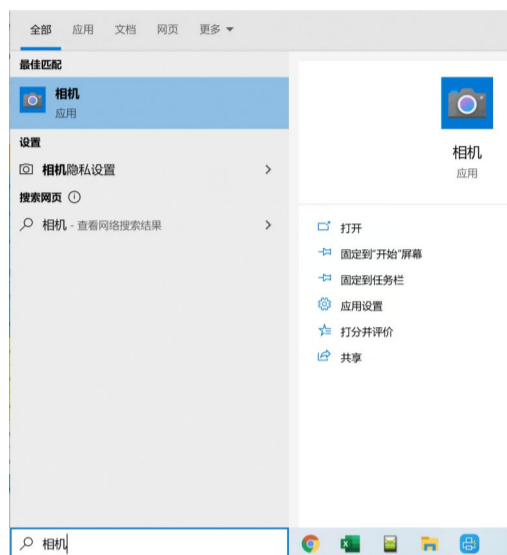


第三步, 用之前的两个螺丝锁紧。



Q5: 如何开启相机?

A1: 在桌面左下角的搜索框, 输入“相机”, 即可打开相机。



Q6: 如何通过 KVM 模块, 控制另一台设备?

A1: 要用 KVM 模块控制另一台设备, 需要受控端设备有 HDMI / VGA 和 USB A/C 接口。

下面以确认受控端设备 TCP/IP 配置信息为例 (受控端设备开机状态下):

第一步: 用 HDMI Type A 或 VGA to HDMI (如果受控端只有 VGA 口) 线连接 KVM 和受控端设备。



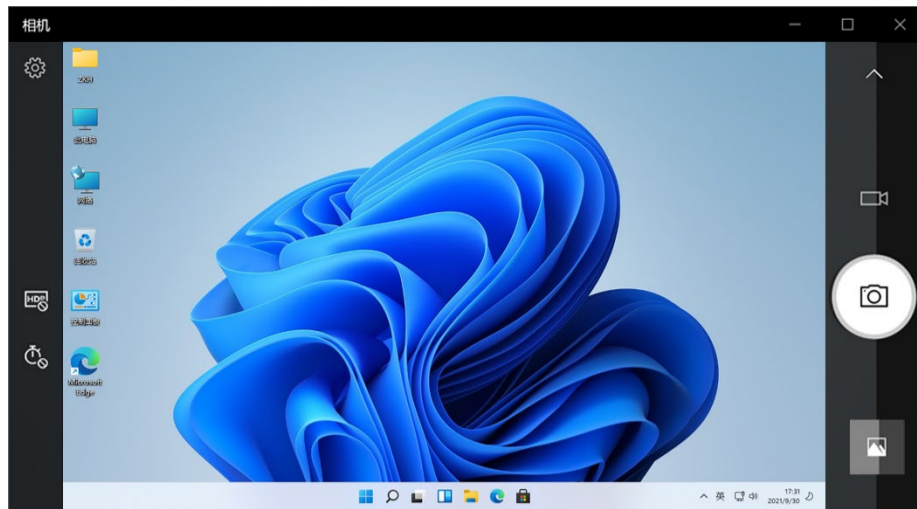
第二步: 用双公口 USB C 或 USB C to A (如果受控端只有 USB A 口) 线连接 KVM 和受控端设备。



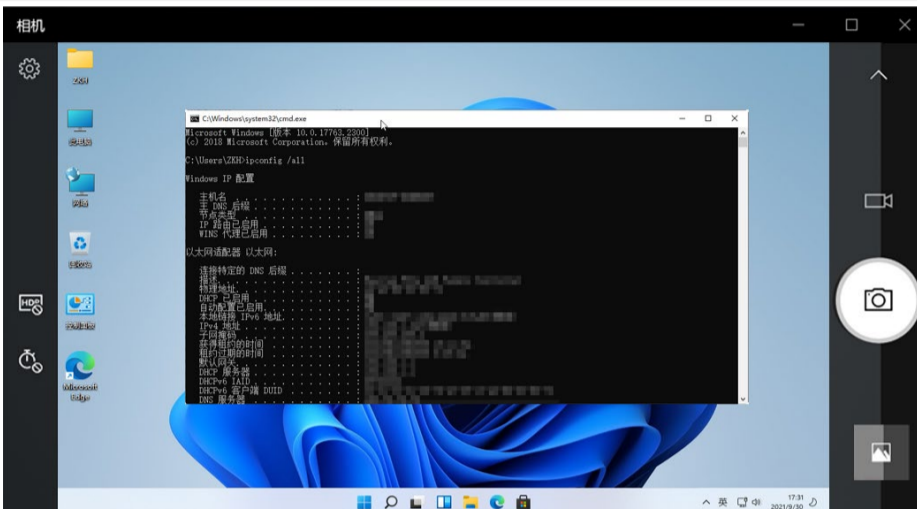
第三步: 在桌面左下角的搜索框, 输入“相机”, 打开相机。



第四步: 点击相机界面左侧的切换图标, 切换到受控端设备界面。此时, Pocket 3 自带的键盘和鼠标只对受控端设备有效。(如需对本机有效, 需要拔掉双公口 USB C 或 USB C to A 线)



第五步：在受控端开启命令行，输入：ipconfig /all，这样就可以看到受控端的 TCP/IP 配置信息。



请注意：

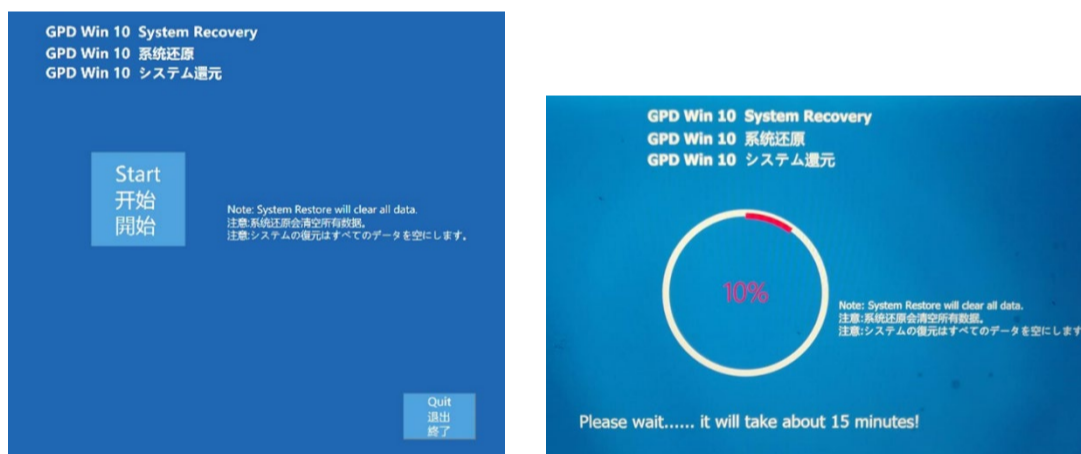
- 1、鉴于相机功能过于简单，GPD Pocket 3 同时内置了自主开发的采集受控端设备画面的 GPD HDMI IN 工具，原理同相机。
- 2、用 obs studio 直播工具 (<https://obsproject.com/zh-cn/download>)，也能起到同样效果。

Q7：我的系统坏掉了，又不懂重装系统，如何实现“一键还原”？

A4：“一键还原”是可以的，具体操作如下：

第一步：关闭设备，按“电源键”开机的同时，按住“TAB”键，机器进入下图界面。

第二步：点击“开始”即可还原到出厂系统，点击“退出”即可退出还原功能。还原过程如下图所示，需要等待 15 分钟左右，完成后，会自动重启进入系统。



请注意：

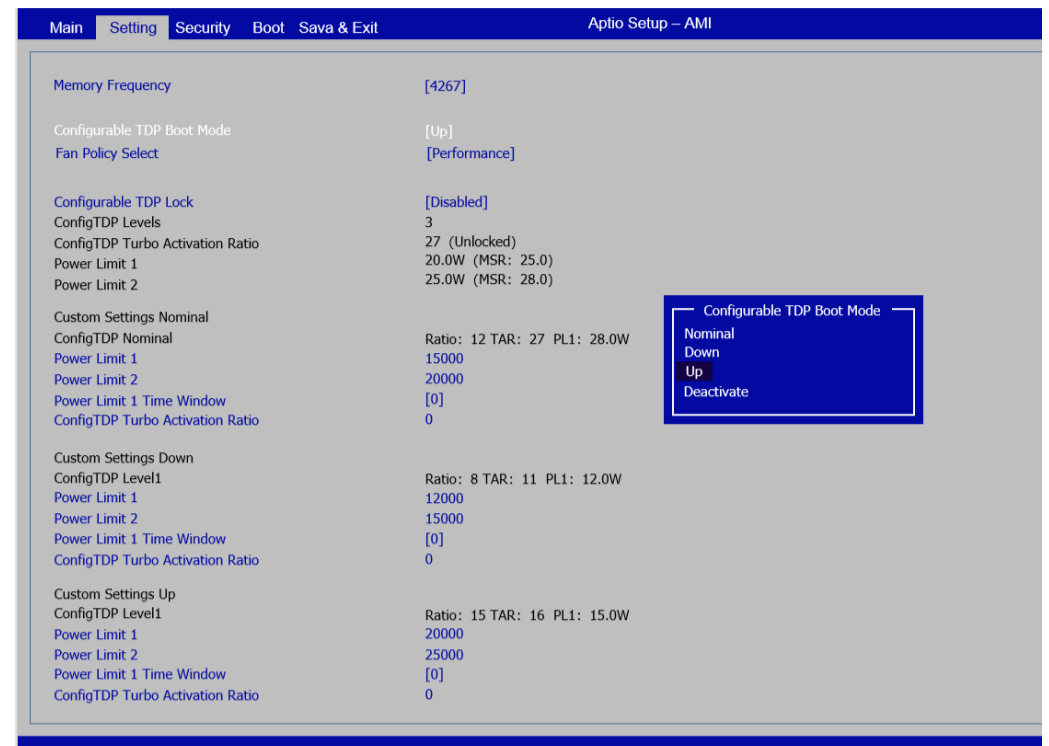
- 还原时，必须保持电量在 50%以上，或者插入充电器下进行，电量低于 50%将无法还原。
- 系统还原会清空 C 盘所有数据，请提前备份好重要问文件。还原界面支持触屏和鼠标操作。

[Englis] GPD Pocket 3 Q&A

Q1: How to adjust the TDP power consumption of the device?

A1: It is very easy, you can adjust it through the BIOS. The specific operations are:

1. Press the power button to boot, and hold down the Fn+Del key at the same time to enter the BIOS.
2. Select Setting tab.
3. Click "Configuration TDP Boot Mode", in the pop-up selection box, there are "Nominal", "Down" and "Up" three block TDP to choose from,
 - Down: Energy saving mode (12W)
 - Nominal: Normal mode (15W)
 - UP: High performance mode (20W)
4. After selection, press Fn+F4 to save and restart to take effect. (For the BIOS interface, please refer to the figure below)



Please note:

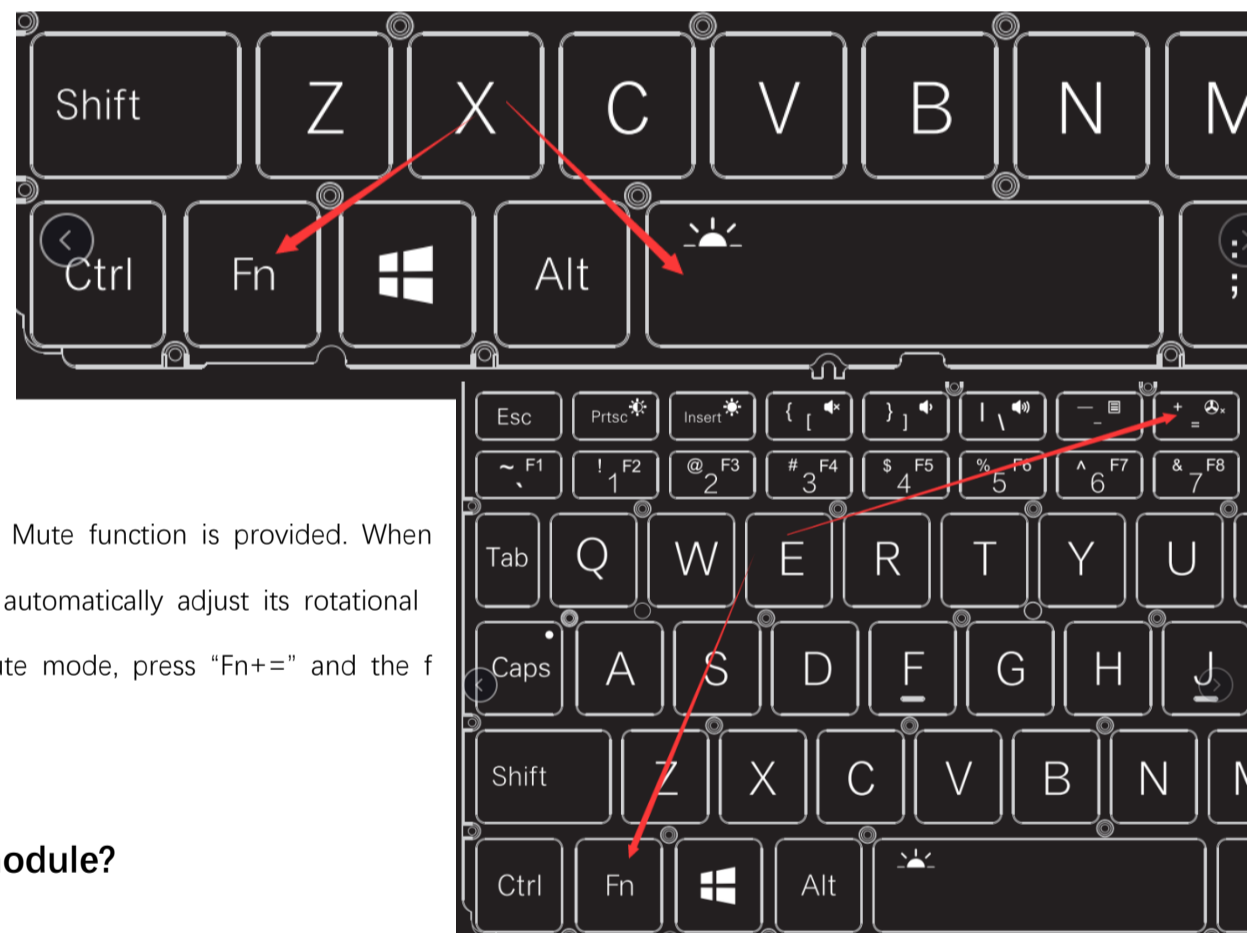
The Pocket 3 (N6000 processor) only supports 6-10W power adjustment, but the three-stage power adjustment is not supported.

Q2: How to turn on or off the keyboard backlight?

A1: The operation is rather simple: when your computer has been turned on, press Fn+Space to turn on the keyboard backlight, and press the hotkey again to turn it off.

Please note:

The keyboard backlight turns off automatically after 30 seconds.



Q3: How to turn on or off the fan?

A1: For Pocket 3, the fan cannot be completely turned off. However, a Mute function is provided. When your computer is turned on, the fan will start working by default and automatically adjust its rotational speed according to the current temperature. If you want to go the Mute mode, press "Fn+=" and the fan will rotate at a ultra low speed.

Q4: How to install and remove the RS-232/KVM module?

A1: Pocket 3 is fitted with the USB A module by default. If you have bought the RS-232 or KVM module, you can follow the following simple procedures to install it:

Step 1: Use a 2.5mm hex driver to remove the two screws of the USB A module and unplug it.



Step 2: Insert the RS-232 or KVM module until it is firmly seated. Please pay attention to the direction of the insertion - the motherboard should be in the lower side.

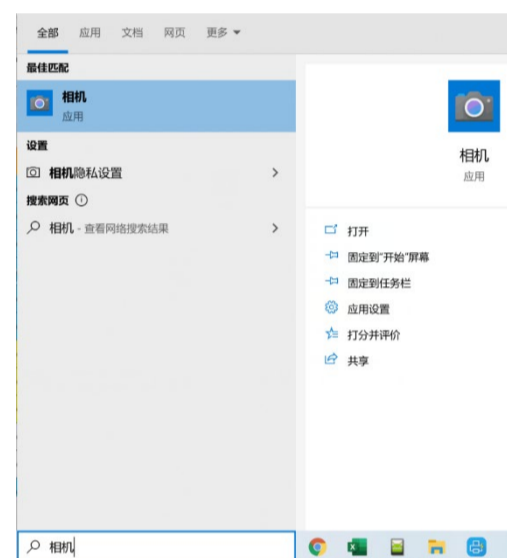


Step 3: Fix the module tight with the two screws.



Q5: How to turn on the camera?

A1: Enter "camera" on the search box at the lower left corner of the desktop to turn on the camera.



Q6: How to control another device using the KVM module?

A1: To control another device using the KVM module, the device to be controlled should have a HDMI/VGA and USB A/C interface.

The following is an example of confirming the TCP/IP configuration information of the device to be controlled (under powered-on state):

Step 1: Use a HDMI Type A or VGA-to-HDMI cable (when the device to be controlled has a VGA interface only) to connect the KVM to the device to be controlled.



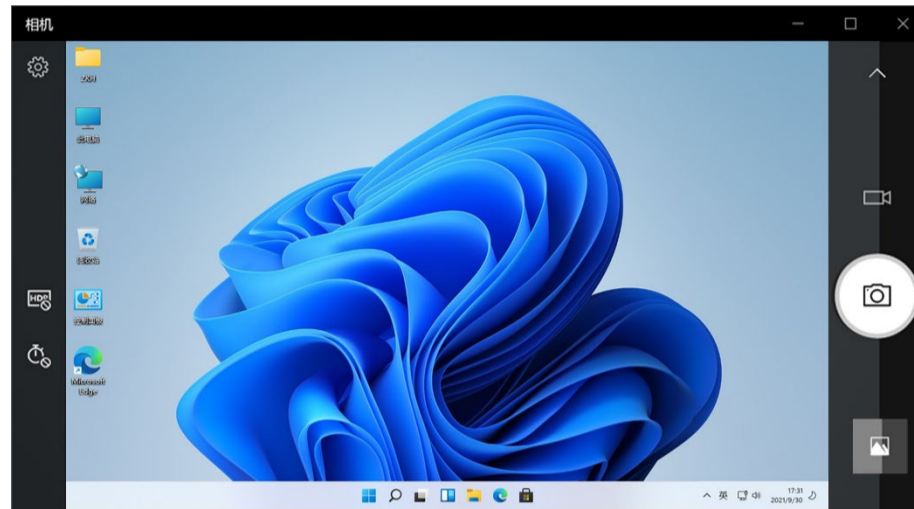
Step 2: Use a male-to-male USB or C-to-A USB cable (when the device to be controlled has a USB A interface only) to connect the KVM to the device to be controlled.



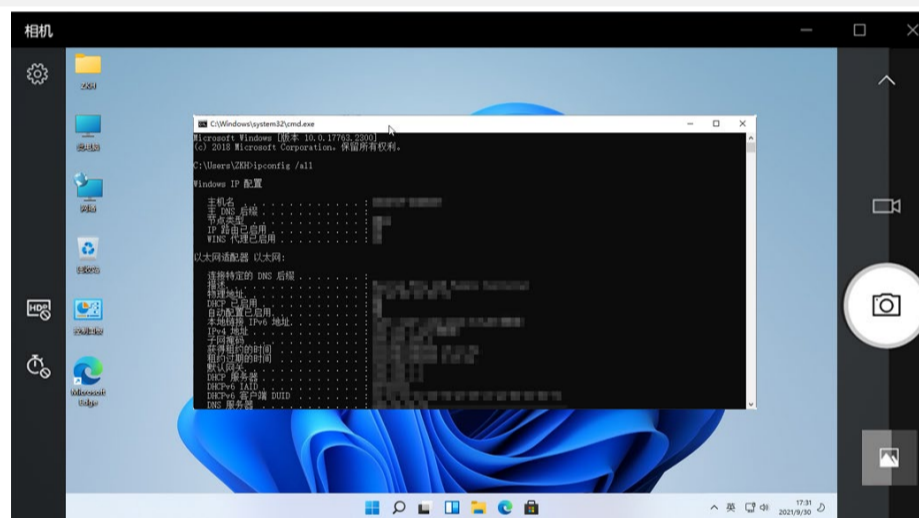
Step 3: Enter "camera" on the search box at the lower left corner of the desktop to turn on the camera.



Step 4: Click the Switch icon on the camera interface to switch to the interface of the device to be controlled. At this point, the keyboard and mouse of the Pocket 3 are only effective for the device to be controlled. (To make resume their control over Pocket 3, you need to unplug the male-to-male USB C or C-to-A USB cable).



Step 5: Enable the command line at the device to be controlled and enter "ipconfig /all", then you will see the TCP/IP configuration information of the device to be controlled.



Please note:

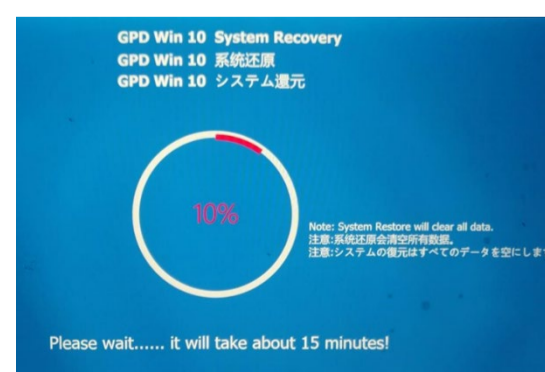
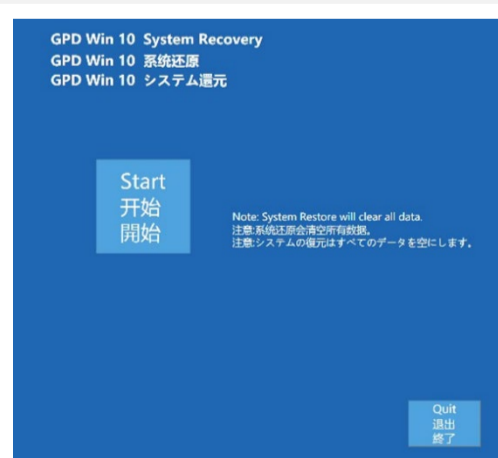
1. Given the simple features of the camera, the GPD Pocket 3 also has a built-in, in-house developed GPD HDMI IN tool capable of collecting the images of the device to be controlled, which works in the same principle of the camera.
2. The obs studio livestreaming tool (<https://obsproject.com/zh-cn/download>) also offers the same function.

Q7: When my WIN Max system is broken, I don't know how to re-install system, how can I implement the "one key recovery" ?

A4: "one key recovery" is available, you can follow the steps below:

Step 1st: turn off the device, press the "power key" while booting, press and hold the "Tab" key.

Step 2nd: Click "Start" to recovery the factory system, click "Exit" to exit the function. The restoration process is shown in the figure below.You need to wait for about 15 minutes. After the completion, it will restart and enter the system automatically.



Cautions:

- When recovering, the power must be kept above 50%, or plugged into the charger, the power below 50% will not be able to recovery.
- The system recovery will clear all data on the C drive. Please back up important files in advance. The recovery interface supports touch screen and mouse

operations.

[日本語] GPD Pocket 3 質疑応答

Q1: 設備の TDP 電力消費量の調整方法

A1: BIOS から調整可能、方法は：

- 1、電源ボタンを押して、起動の瞬間で Fn+Del を押して BIOS に入る
- 2、Setting を選択
- 3、Configuration TDP Boot Mode をクリックして、出たメニューで Nominal、Down と Up 3つの TDP 選択肢ができる：

- Down: 省エネモード (12W)
- Nominal: 普通モード (15W)
- UP: 高性能モード (20W)

- 4、選択して、Fn+F4 をクリックして保存、再起動してから完了。(BIOS 画面ショットをご参考ください。)



ご注意

Pocket 3 (N6000 プロセッサ) 機種は消費電力の3段階調整を対応しません。6~10W の消費電力調節しか対応できません。

Q2: キーボードのバックライトを消す方法は?

A1: 操作方法は簡単です。パワーオンの状態で、Fn + Space の組み合わせキーを押してバックライトを点灯できます。もう一度組み合わせキーを押すと、バックライトをオフにできます。

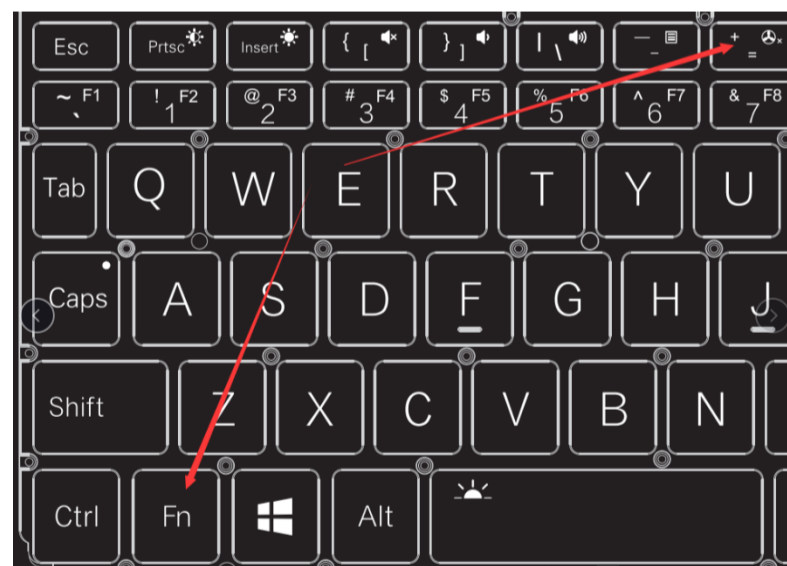
ご注意

キーボードのバックライトは 30 秒後に自動的にオフになります。



Q3: ファンをオン・オフにする方法は?

A1: Pocket 3 はファンを徹底的にオフにできませんが、ファンのミュート機能を持っています。ファンはパワーオン時起動し、温度に合わせて自動的に回転数を調整できます。ミュートにしたい場合、「Fn+=」の組み合わせキーを押して設定できます。この場合ファンは超低速で回転します。



Q4: RS-232 / KVM モジュールを取り付け・取り外しする方法は?

A1: Pocket 3 は USB A モジュールを標準として搭載しています。RS-232 または KVM モジュールを購入した場合、次の手順に従って簡単に取り付けることができます。

ステップ 1: 軸径 2.5mm のプラスドライバーを使って、USB A モジュールを固定する二つのネジを取り外し、USB A モジュールを抜け出します。



ステップ 2: RS-232 または KVM モジュールを奥まで差し込みます。マザーボードのある一面が下に向くように注意してください。

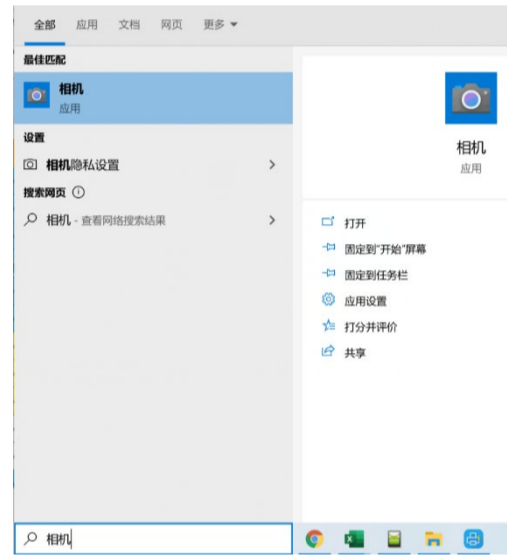


ステップ 3: 先ほど取り外した 2 個のネジで固定します。



Q5: カメラを起動する方法は?

A1: デスクトップの左下にある検索欄に「カメラ」と入力すればカメラを起動できます。



Q6: KVM モジュールで別の機器を制御する方法は?

A1: KVM モジュールで別の機器を制御するには、制御される側が HDMI / VGA と USB A/C インターフェースを持っている必要があります。

今から制御される側の TCP/IP 配置情報の確認を例にして説明します (制御される機器は起動状態):

ステップ 1: HDMI Type A または VGA to HDMI (制御される機器が VGA ポートしかない場合) ケーブルで KVM と制御される機器を接続します。



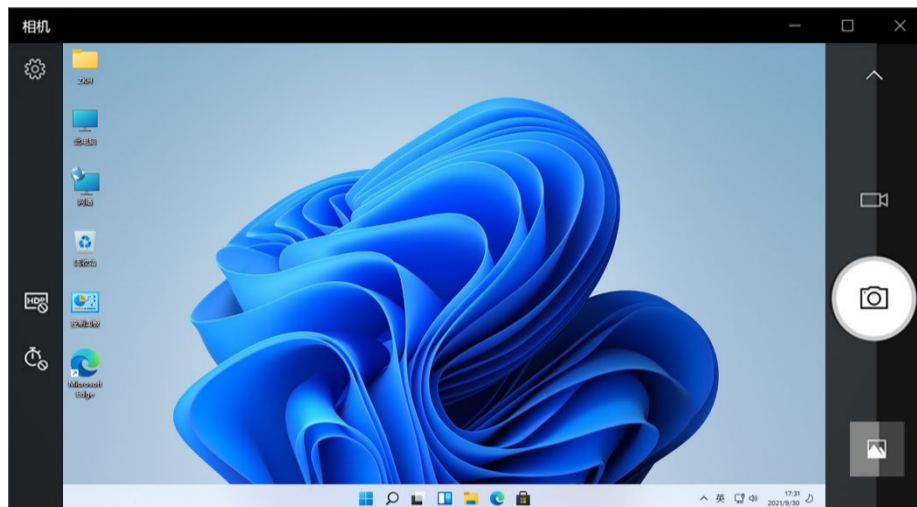
ステップ 2: 2ポート USB C または USB C to A (制御される機器が USB A ポートしかない場合) ケーブルで KVM と制御される機器を接続します。



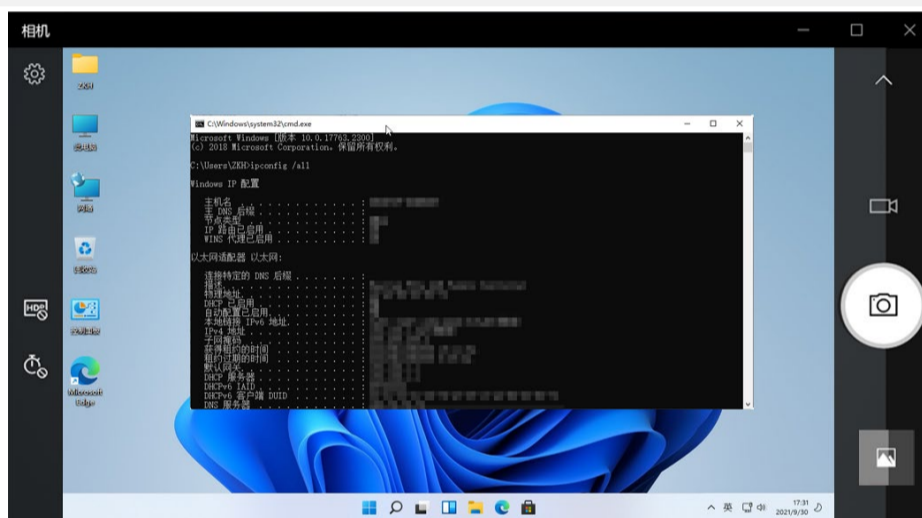
ステップ 3: デスクトップの左下にある検索欄に「カメラ」と入力してカメラを起動します。



ステップ 4: カメラ画面の左側にある切替アイコンをクリックして制御される機器の画面に切り替えます。この時、Pocket 3 附属のキーボードとマウスは制御される機器に対してのみ効きます。(制御側機器にも効く必要がある場合、2ポート USB C または USB C to A ケーブルを抜く必要があります)



ステップ 5: 制御される機器のコマンドプロンプト画面で「ipconfig /all」と入力すれば、制御される側のTCP/IP 配置情報をチェックできます。



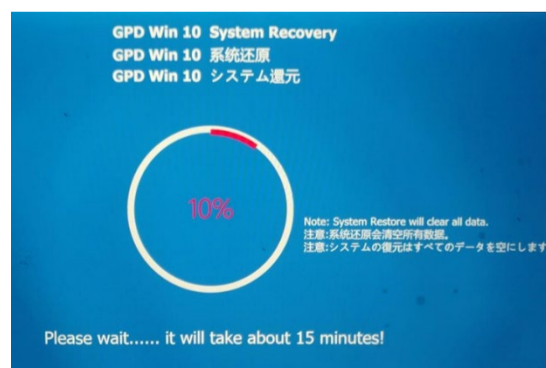
ご注意:

- 1、カメラ機能が非常に簡単ですので、GPD Pocket 3 は自主開発した、制御される機器の画面を記録できる GPD HDMI IN ツールを内蔵しています。その原理はカメラと同じです。
- 2、obs studio ライブ配信ツール (<https://obsproject.com/zh-cn/download>) を使うと、同じ効果が得られます。

Q7: システムが壊れる時、リカバリー資料持ってない場合、初期化方法ありますか？

A4: できます、方法は：

- ① . 電源をオフにして、再起動する、ロゴでる瞬間「Tab キー」を連続押し：
- ② : 開始ボタンをクリック、自動的にリカバリー開始、15 分くらいかかる、終わったら自動的に再起動してから完了。終了ボタンをクリック、リカバリー状態を終了できる。



注意:

- リカバリーの時、電量は 50% 以上もしくは充電器を接続してる場合に行ってください。
- 初期化はデータの消去が伴うございます。初期化する前にあらかじめデータのバックアップを取得ください。